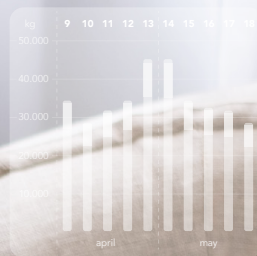


# e-Gro Q3 Release How To Guide

More information: [egro.support@grodan.com](mailto:egro.support@grodan.com)



Variety A	
Production	Crop
1,2 kg/m <sup>2</sup> 48.750 kg	1,6 kg/m <sup>2</sup> 65.000 kg
Most recent harvest Week 22	
Crop balance Week 22: Strong / Vegetative	

## e-Gro Q3 2022 Release:

# Optimized Yield Forecaster, advanced crop registrations for more insights and an improved user experience

Being part of the greenhouse sector, we are well aware of the fact that the current season came with multiple challenges and uncertainties in your greenhouse. Gas, energy, the significantly increased inflation, and the changing climate asks for even more flexibility and creativity to adapt to this changing environment. With the required optimization of growing strategies, the accuracy, predictability, and reliability of data are, therefore, more important than ever. The decisions you make today have a major impact on your results tomorrow.

As such, we aim to support you in the best way by releasing helpful updates available in e-Gro. This release focuses on the optimized Yield Forecaster, the advanced Crop registration within the Crop module, and the optimized Conditions module for an improved User Experience (UX). And we succeeded: the new updates will contribute to continuously spot opportunities to level up your cultivation performance – based on your specific situation. In all, user-friendliness has further improved.

## What's new?

### Optimized Yield Forecaster

- Additional meteo & crop registration parameters will increase the accuracy and stability of the model

### Crop registrations

- Timely reminder that your end-date to crop is coming to an end
- Additional parameters such as average fruit weight and fruits/m2

### Conditions module for improved user experience

- Improved user experience to analyze your data more efficient

### Support center

- New manual: Dashboard
- New manual: Reports

Optimized Yield Forecaster

P3

Crop registrations

P4

Conditions module for improved user experience

P5

Support center

P6

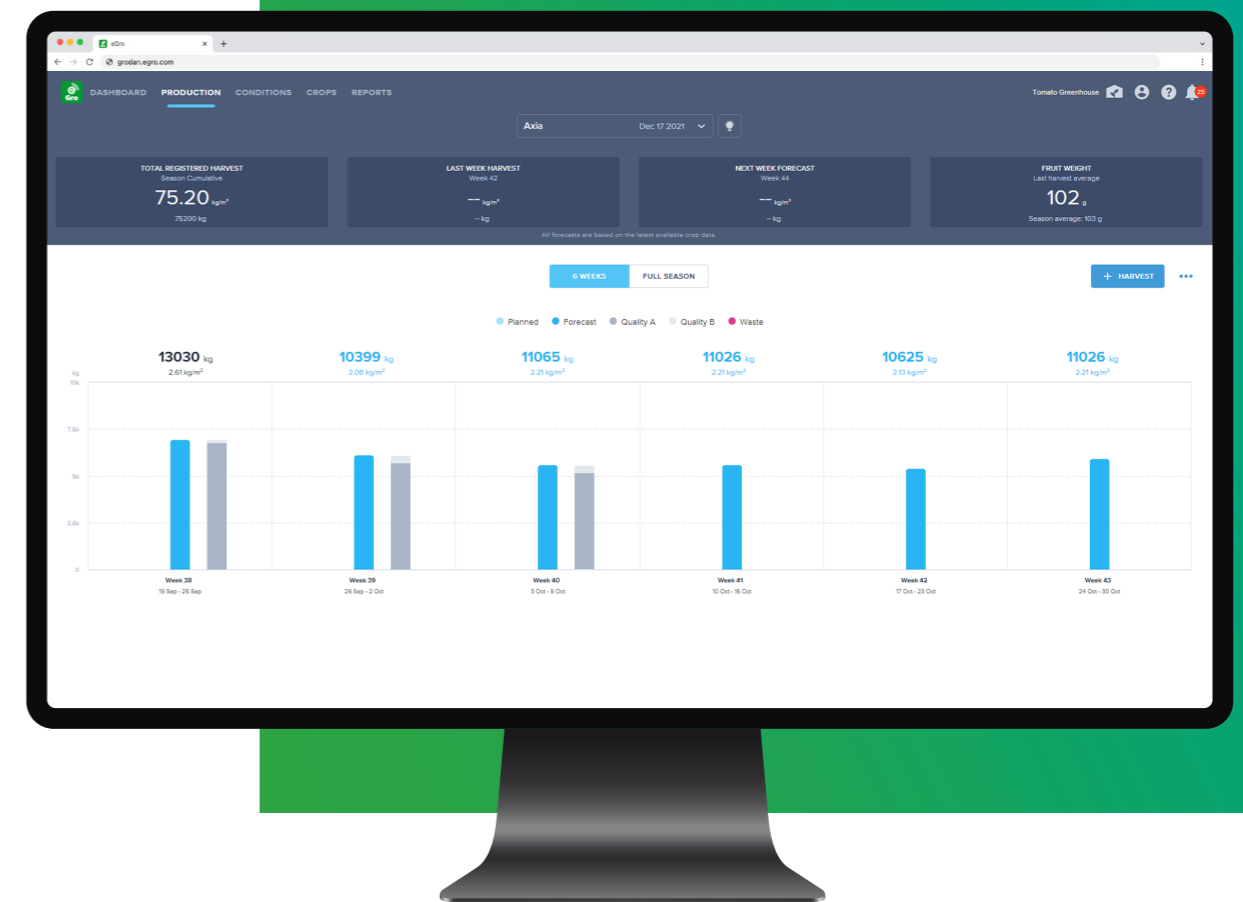
1

# Optimized Yield Forecaster for more accurate predictions

The Yield Forecaster module is more relevant than ever as it will help you to look forward during this challenging season. Insight into the correlation between climate conditions and irrigation is very important in this regard. With this release, we added additional meteo & crop registration parameters into the model. The Yield Forecaster now contains a richer assortment of data to predict the yield in a more accurate way.

## What's your benefit?

By adding these new parameters, the Yield Forecaster becomes even more responsive and adaptive to your crop performance and weather changes, which will help you to further optimize your growing strategy.



## How does it work?

Unlike other updates, the current update will not be automatically integrated into the platform. We will reach out to all users to explain this in more detail and advise you on the possibilities, tailored to your situation and preferences.

2

## Crop registrations: More accurate and extensive

In challenging seasons like these, it is beneficial to know where you could save costs without having a large effect on your crops' growth. Therefore, the Crop registrations module has been improved in several ways for pepper and tomato growers. Using accurate and reliable data, new opportunities tailored to your unique situation can be discovered.

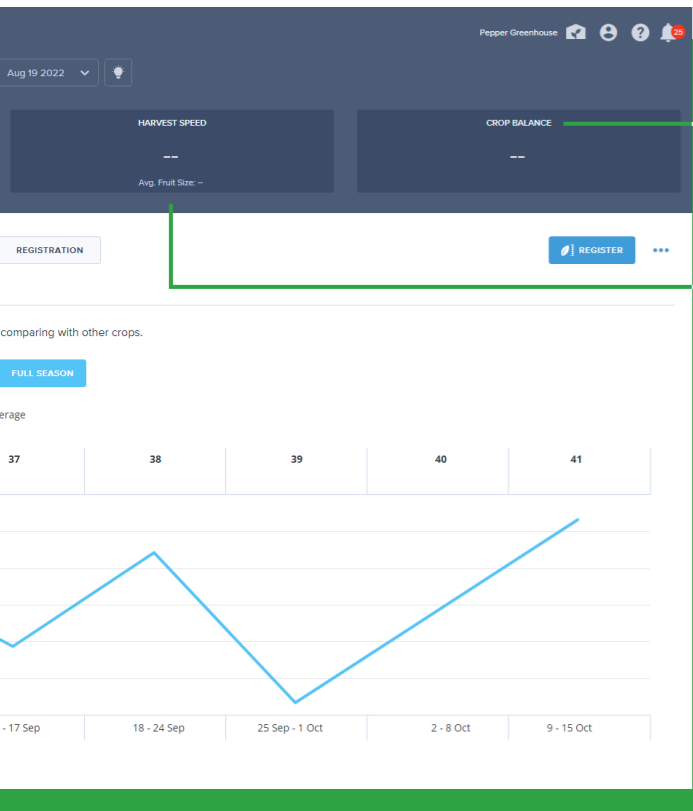
### What's new?

#### Timely reminder that your end date to crop is coming to an end

When adding a crop, you will find a new parameter to fill out: the desired end date ('End of season' field). Notifications will remind you once this date is approaching.

#### Graphs now include average fruit weight

Another new parameter with which you can calculate and plot into a graph is the 'Average fruit weight'. You can use this data to correlate with other parameters, for example, to analyze the effect of the temperature on your average fruit weight or to compare this year's average fruit weight with last year's. This can easily be read from the graphs. And speaking of graphs; you might like to know that from now on it is also possible to create longer graph titles.

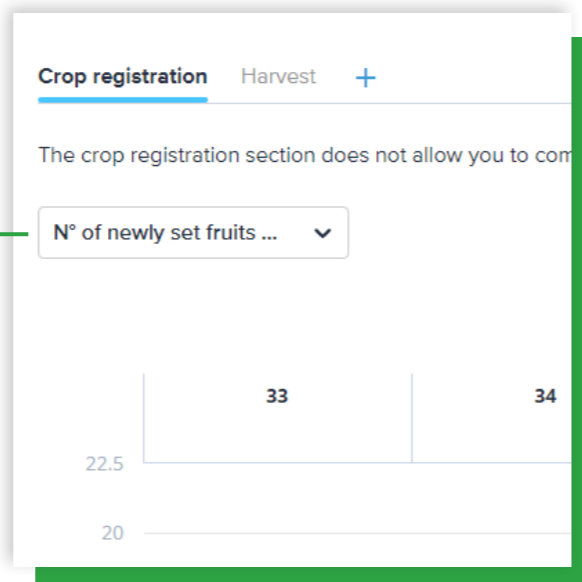


#### Pepper growers can now graph newly set fruits per m2

Just like tomato growers, now also pepper growers can select 'Newly set fruits per m2' as a graph within the Crop registration module. These parameters give you more insights into the speed of your crop growth on a weekly basis.

#### Side shoots are included in crop registration data calculations

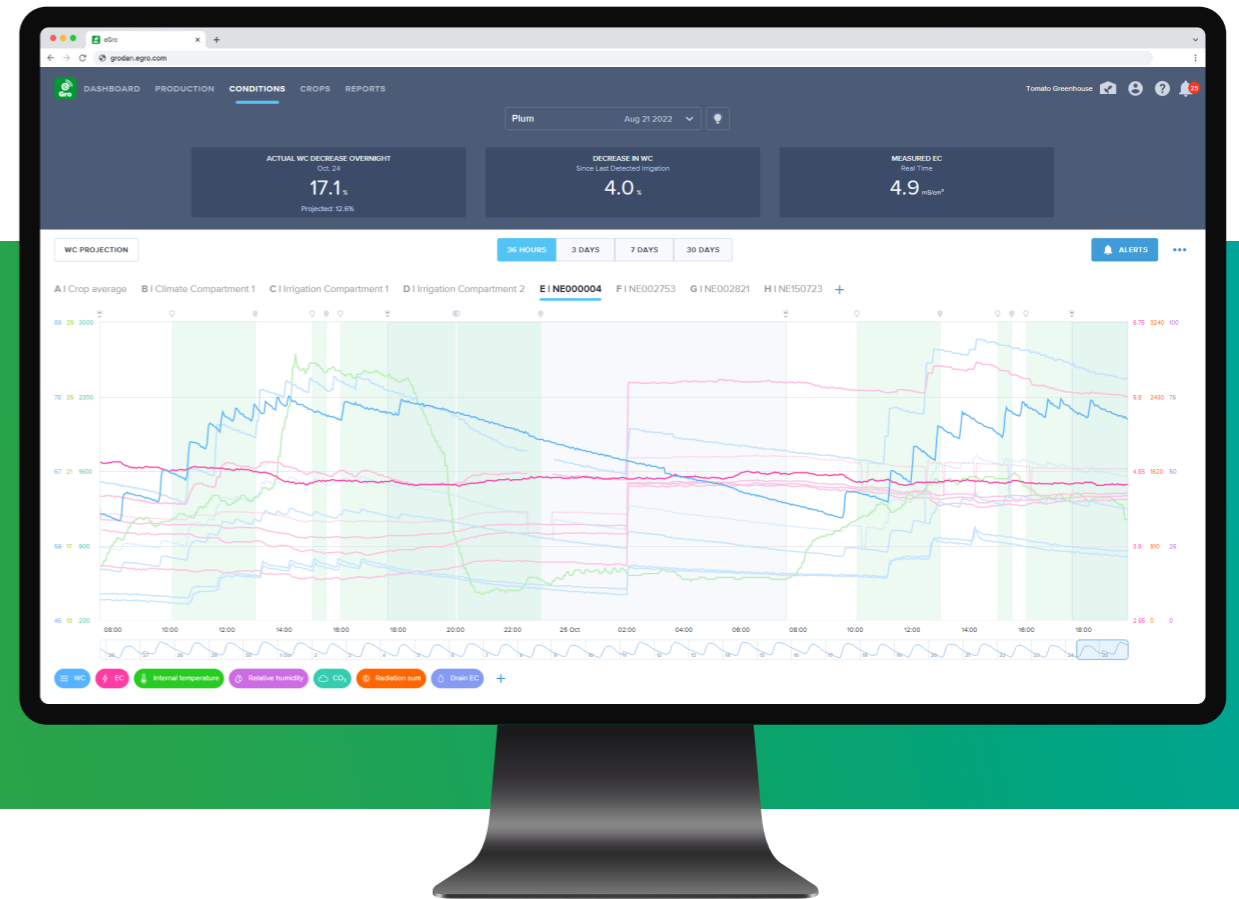
Now that side shoots are included in the calculations of the crop registration data, calculations are more accurate than ever.



3

## Redesigned Conditions module for improved user experience

The Conditions module is a crucial feature e-Gro, which is why we deep-dived again into this module to show essential information in a better and more user-friendly way. This module enables you to analyze the rootzone and climate simultaneously to optimize your irrigation and crop strategies based on real-time, accurate data. It helps you maximize output, cost savings while optimizing your yield and crop performance. All improvements and updates are focused on an improved daily experience and way of working.



#### Easier way to analyze your data more efficient

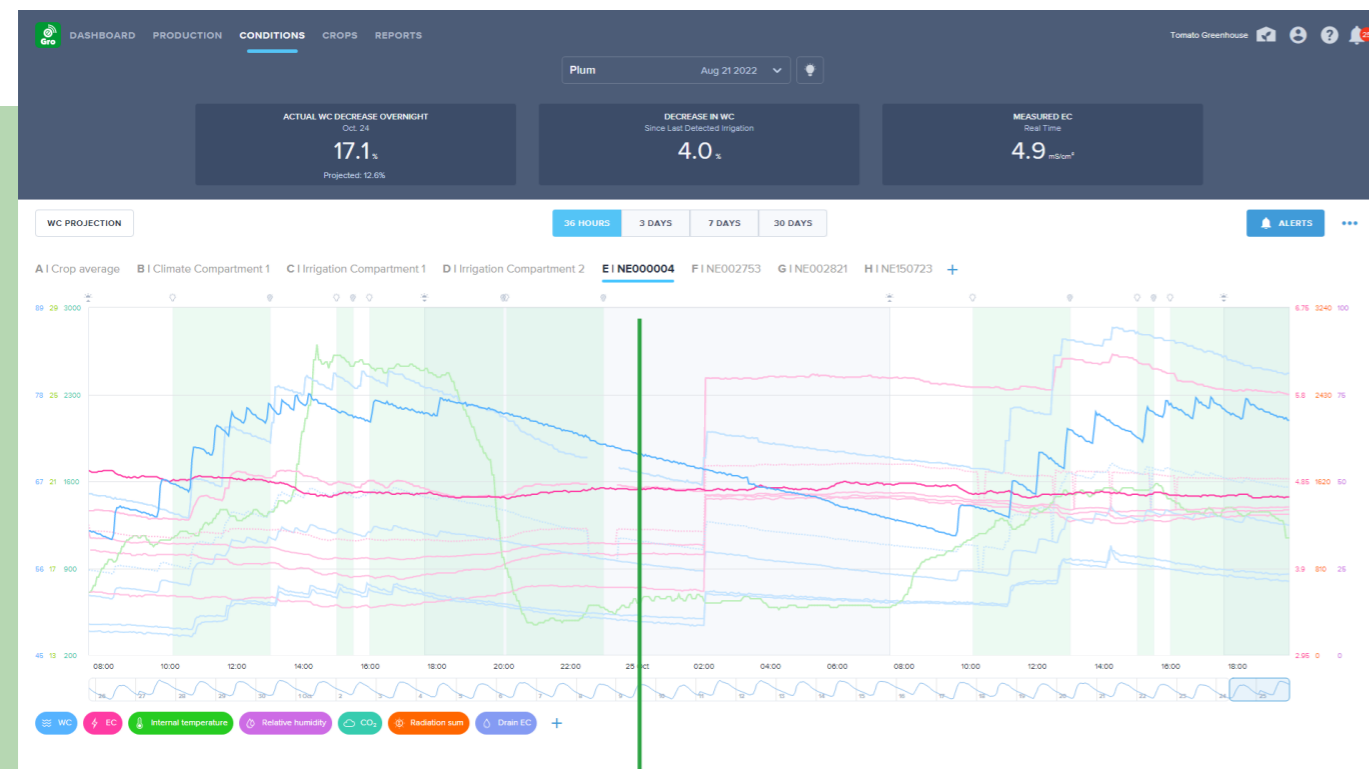
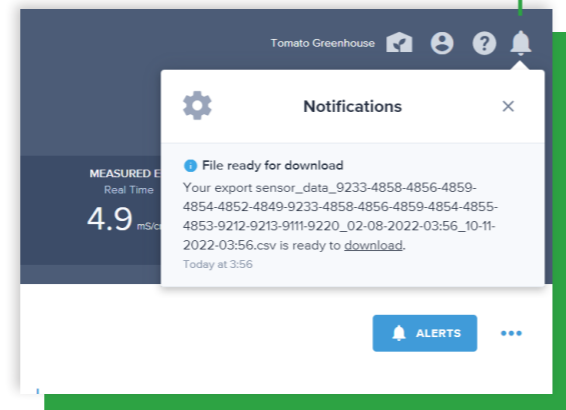
To read your data quickly and intuitively from the graphical display, we added identifiers and making the lines on the graph selectable. Once a line is selected the accompanying sensor and data points become highlighted, allowing you to quickly focus on the data you are interested in without moving your mouse.

#### Adding end dates to historical sensors, keeping historical data available

To help you interpret the data even better, we keep the historical data of a sensor in the previous area when moving the sensor to a new area. The update enables you to view the historical sensor data, making the data active and visible in the graph up until 30 days. With this update, your historical averages will not change anymore because of the sensor movement.

### Faster and clearer way to download graph data

Within the Conditions module, you can now export and download (CSV) your graph data in a more efficient way. The system will notify you as soon as your export is generated. After that, you will see a second notification appear (also in your notification area at the 'bell' at the right top of your screen) when your file is ready to download. Now simply click on the 'Download' button to start the download.



### Alphanumerical order of sensor names

Endless scrolling through the sensor list is history. The system now alphanumerically orders your (own created) sensor names, instead of using the order of the addition date.

### Automatic logout after 10 hours

Due to data security, users are being logged out automatically. But to increase user friendliness we increased the session time to 10 hours.

## 4

# Complemented Support Center

We continuously strive to ensure that you can get the most out of e-Gro software. That is why we are always in close contact with you as users. Based on your valuable input and feedback, we now added two more manuals to the Support Center. Aside from the new additions, the Support Center environment offers you all of the latest features and videos and you can contact us directly with any questions you may have. Simply click on the question mark icon at the right top corner of your account to enter the module.



## What's next?

Our green experts continuously work on Grodan's e-Gro platform to provide new features which help you out with further optimizing your growing strategy. Some more exciting things are in development, especially in the field of Artificial Intelligence (AI) driven tools. For instance, it enables you to predict and project the optimal water strategy based on your situation. In the meantime we continue to work on platform stability and security, making sure your data remains always safe when using the platform. We do this by constantly aiming to make a better and user-friendly platform so you can focus on doing what you do best: growing! Stay tuned for the next release.

## Rockwool BV / Grodan

Industrieweg 15  
P.O. Box 1160, 6040 KD Roermond  
The Netherlands

**t** +31 (0)475 35 30 20  
**f** +31 (0)475 35 37 16  
**e** [info@grodan.com](mailto:info@grodan.com)  
**i** [www.grodan.com](http://www.grodan.com)  
**in** [www.linkedin.com/company/grodan](https://www.linkedin.com/company/grodan)  
**🐦** [www.twitter.com/grodan](https://www.twitter.com/grodan)  
**📷** [@grodaninternational](https://www.instagram.com/grodaninternational)

ROCKWOOL® and Grodan® are registered trademarks of the ROCKWOOL Group.

Grodan is the only supplier of stone wool substrates with the EU-Eco label.

