

GroSens 2.2: Cloud bridge installation



TABLE OF CONTENTS

e-Gro Companion App: Cloud Bridge Installation

e-Gro Companion App

Let's start

Step 1: Gateway installation

Step 2: Cloud bridge installation

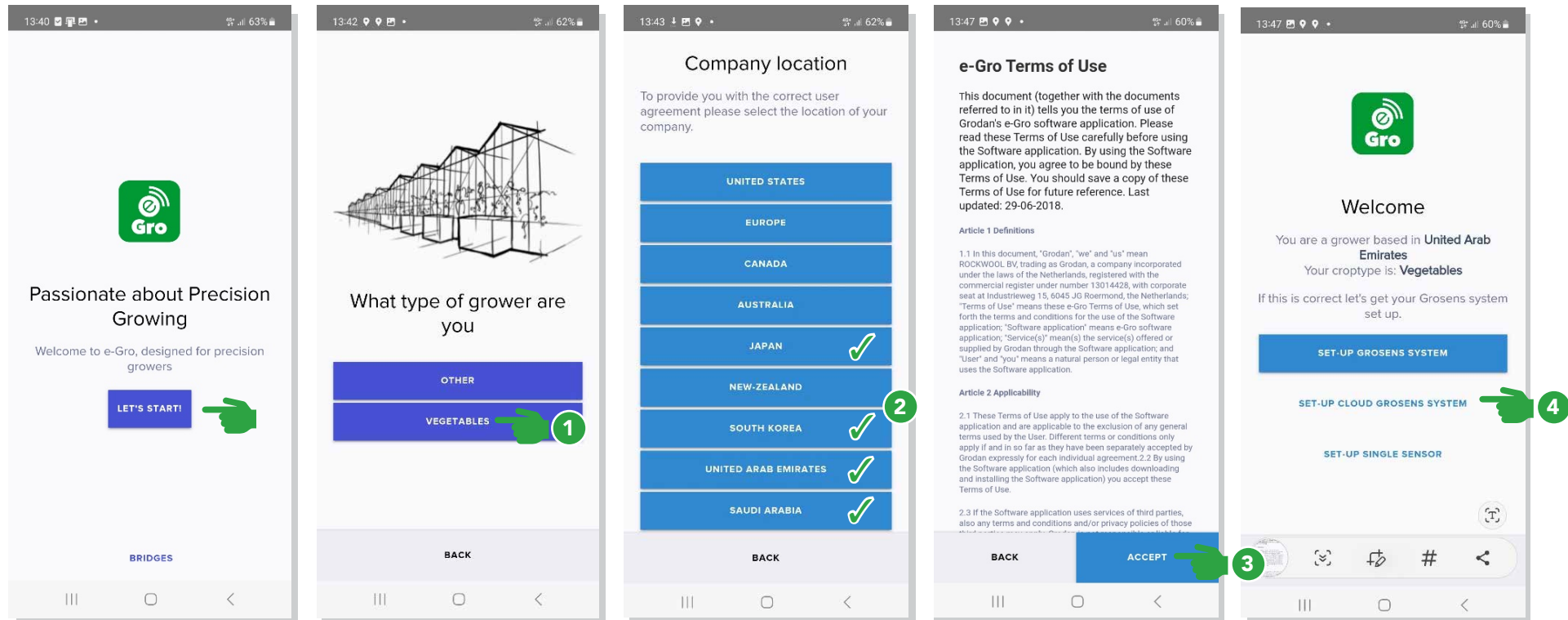
Step 3: Add GroSens sensors

Step 4: Create a room or zone



Grodan[®]

Let's Start: Terms and Conditions



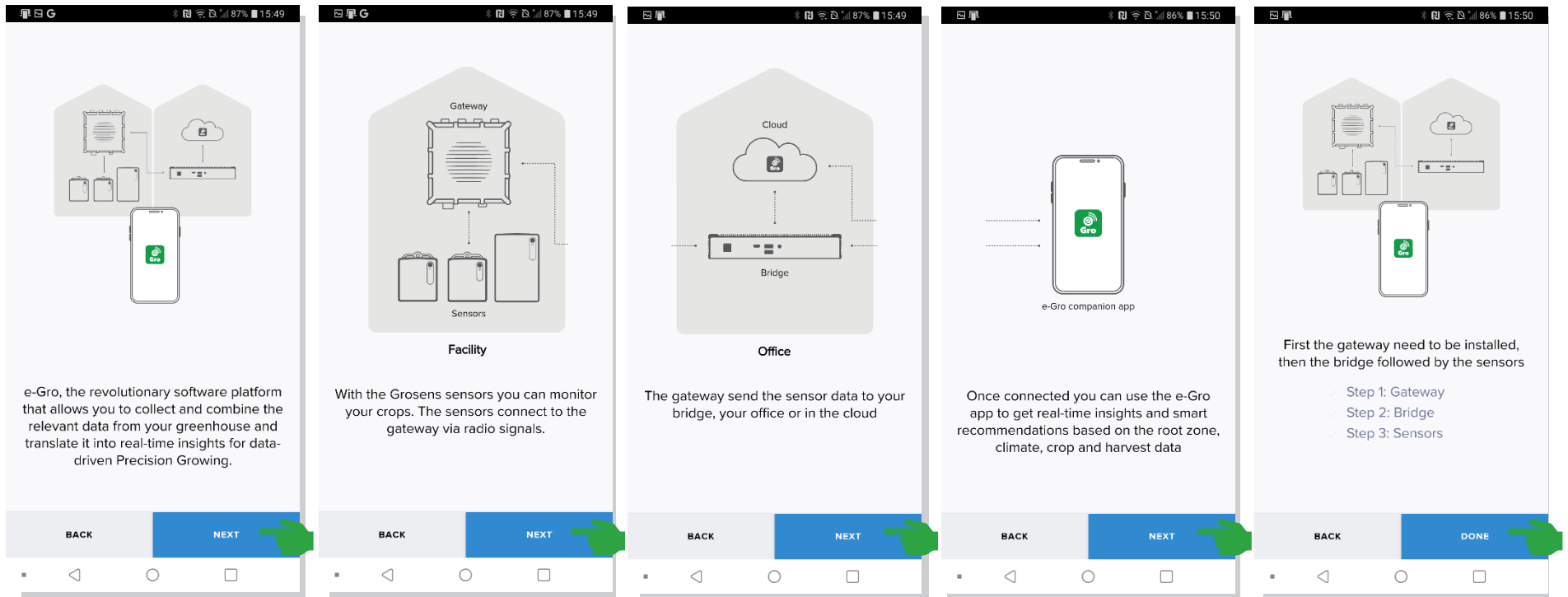
1 Select grower type:
Vegetables (For vegetables, fruit
and flower)
Other (For medical crops market)

2 Select the region you are
located. The Cloud Bridge is
currently only supported in
Japan, South Korea, United Arab
Emirates and Saudi Arabia.

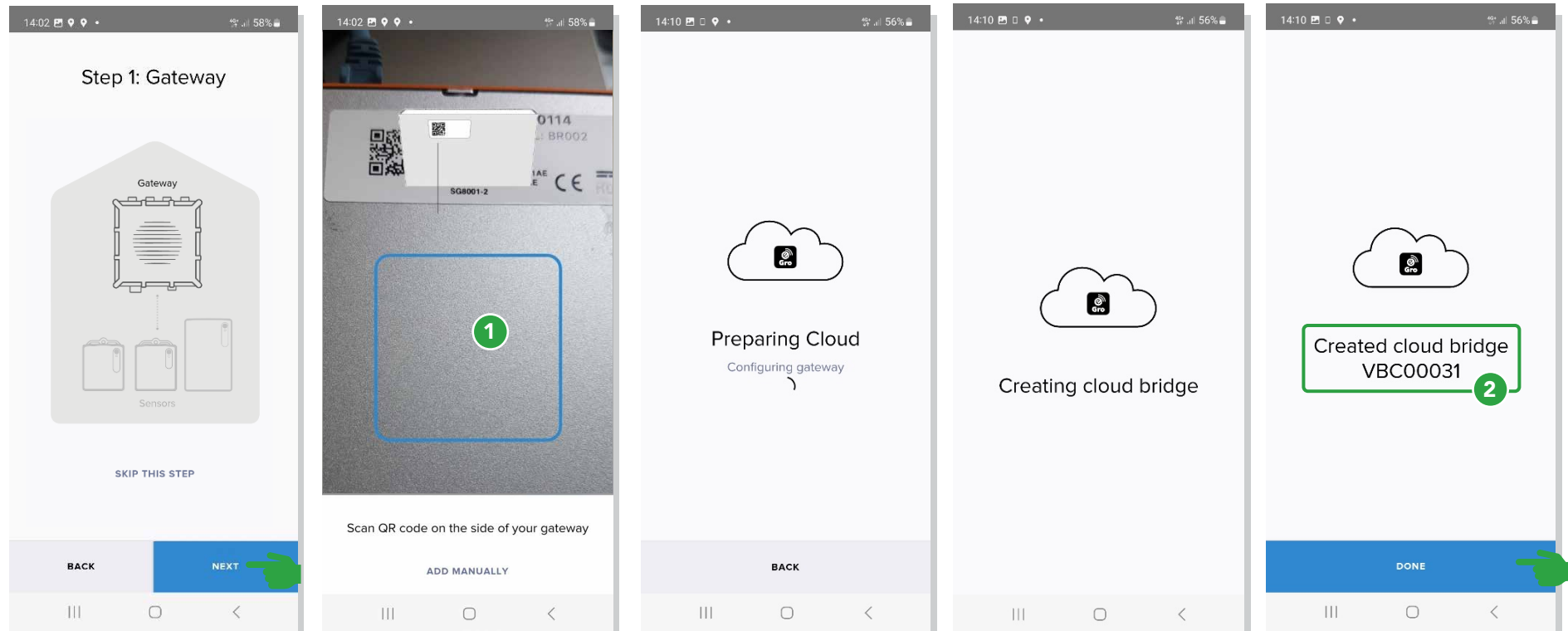
3 Accept the Terms
and Conditions

4 Select set-up cloud
grosens system

Let's Start: System explanation



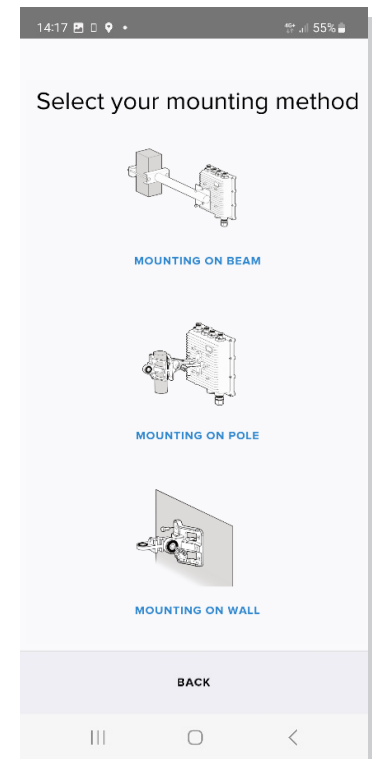
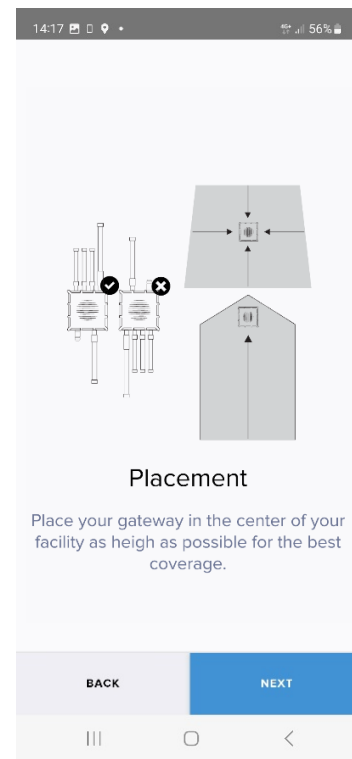
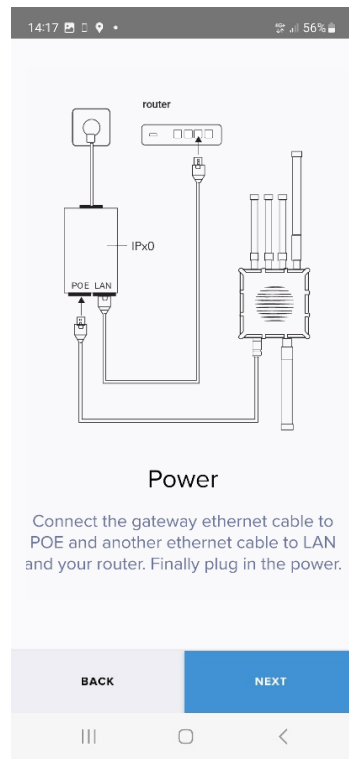
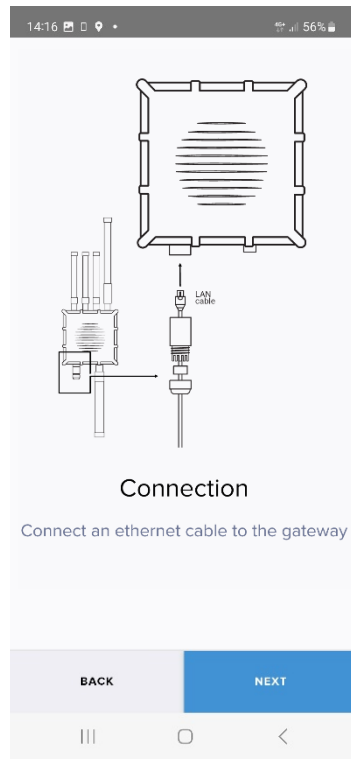
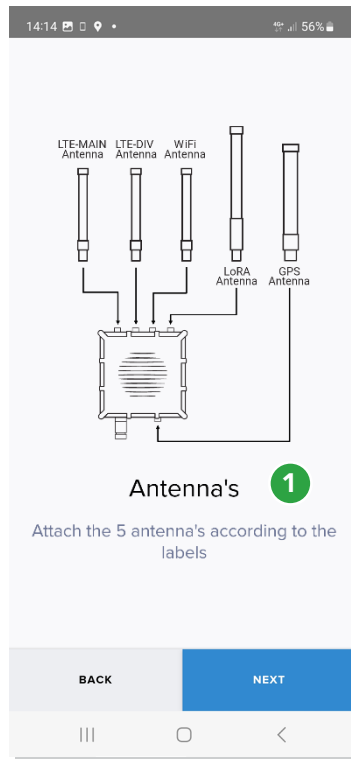
Step 1: Gateway installation and cloud bridge creation



① Scan the QR code on the gateway.
NOTE: Do not plug in ethernet/
power the gateway yet, that is a
later step

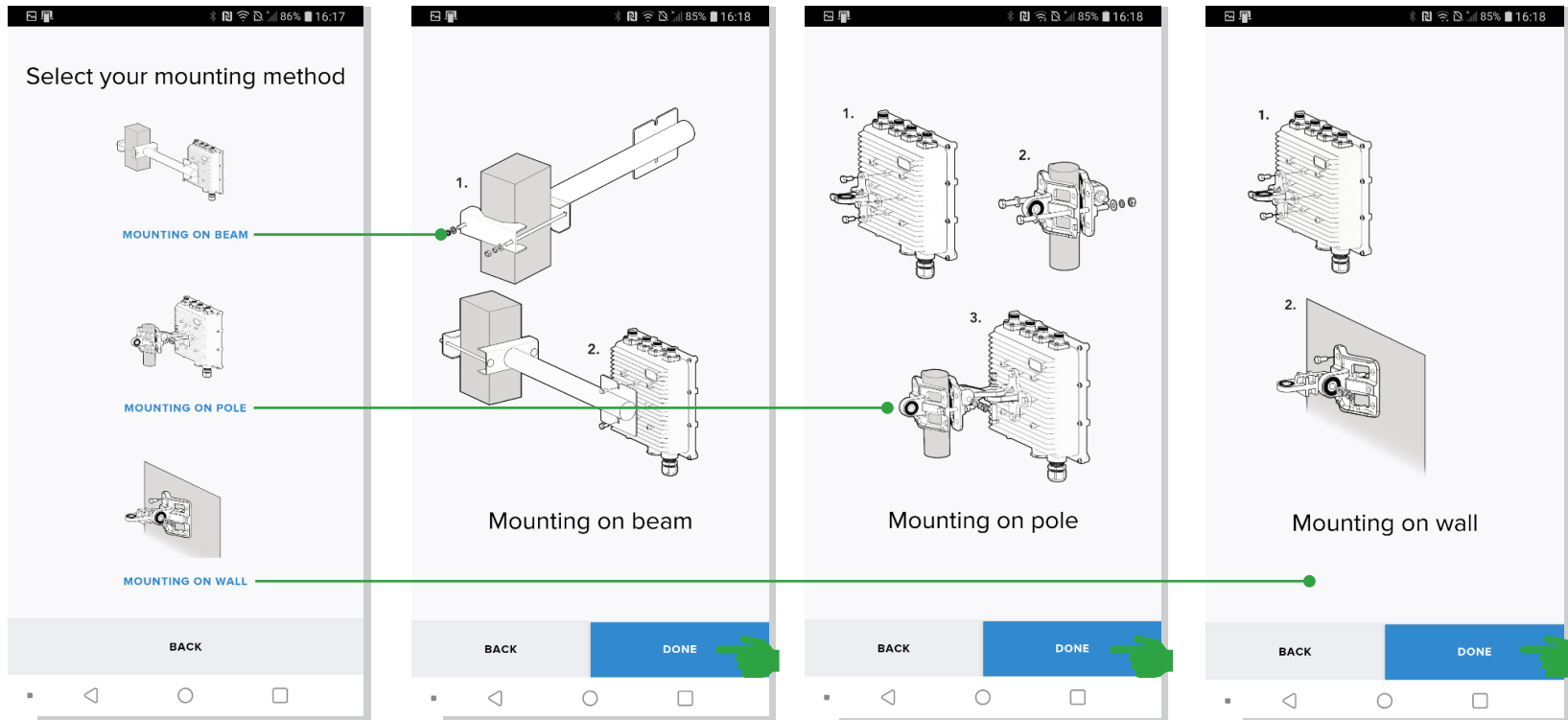
② The actual number of created
cloud bridges varies.

Step 1: Gateway installation

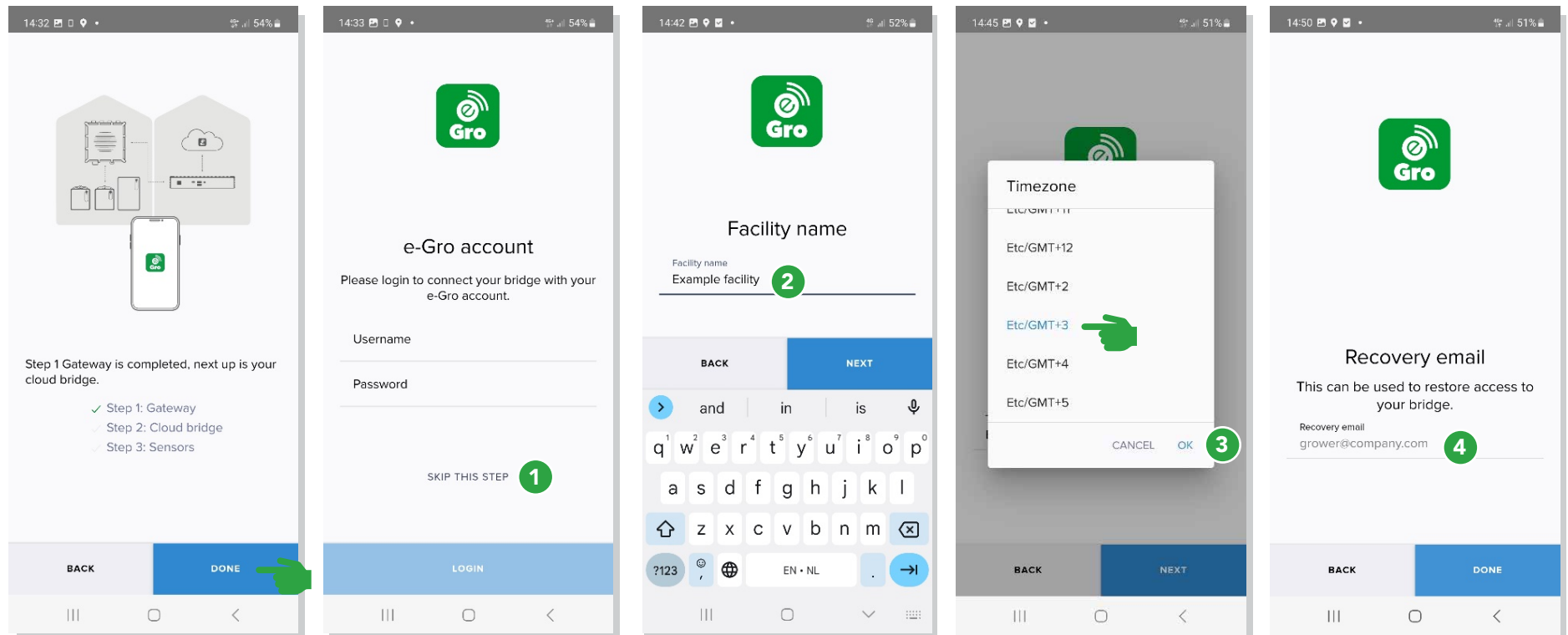


1 Connect the antenna.
NOTE: 2 antennas are delivered with the gateway. Ideally, use the longest antenna.

Step 1: Gateway installation



Step 2: Cloud bridge installation



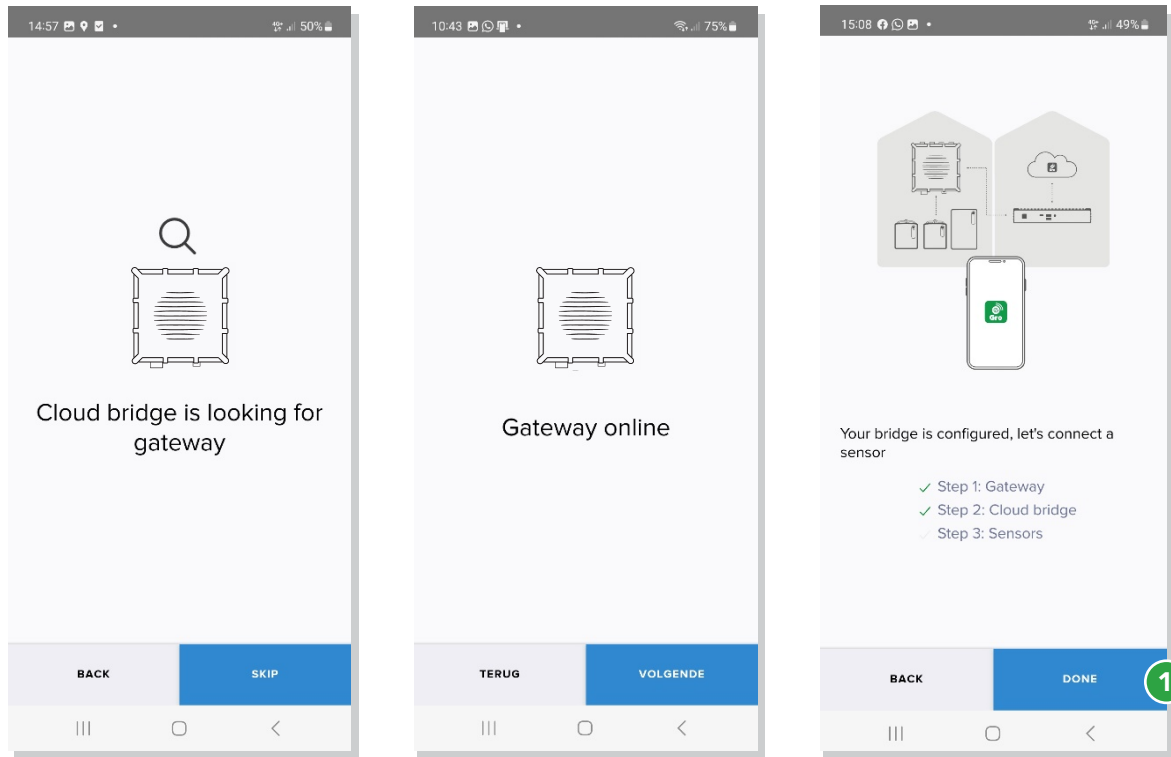
① Optional: Connection to e-Gro account.
NOTE: if you have not subscribed to e-Gro you will skip this step

② Enter facility name and press next

③ Select timezone, press OK and next

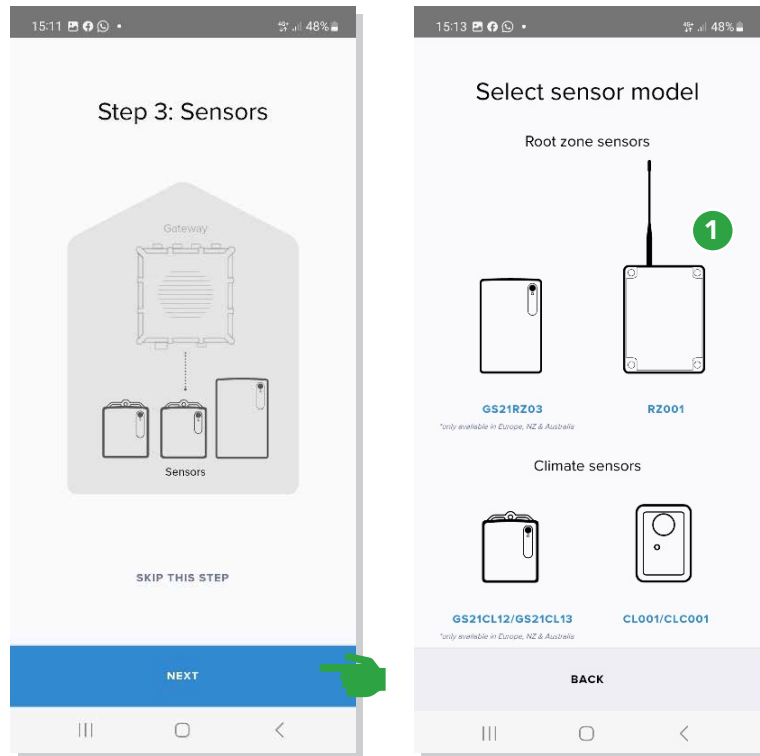
④ Enter your email address for recovery purposes. Note this is needed for events such as getting a new phone or when disconnected from the cloud bridge

Step 2: Cloud bridge installation



1 Select Done

Step 3: Add GroSens sensors



1 Select the sensor to install and follow the onscreen instructions. Additional details on GroSens sensor installation, please refer to the GroSens installation manual

Step 4: Create a room or zone

16:29 42%

You have no rooms yet, let's create a room to allocate your sensor

CREATE NEW ROOM

16:29 42%

1

Section type
Irrigation

Section name
Irrigation room 1

Growing medium
Stone wool

Substrate type
Grodan Vitaflor 75

BACK SAVE

1 Name your room and select correct substrate type

The Grodan Group supplies innovative, sustainable stone wool substrate solutions for the professional horticultural sector. Based on Precision Growing principles, these solutions are particularly applied to the cultivation of vegetables and flowers. In addition to its stone wool substrates, the Grodan Group also provides tailor-made advice and tools to support Precision Growing and thus facilitate the sustainable production of healthy, safe and tasty fresh produce for consumers.

Grodan, a division of ROCKWOOL

Industrieweg 15
Postbus 1160, 6040 KD Roermond
The Netherlands
T +31 (0)475 35 30 20
F +31 (0)475 35 37 16
info@grodan.com
www.grodan.com



ROCKWOOL® and Grodan® are registered trademarks of the ROCKWOOL Group.